



ENTERPRISE CLASS
WI-FI TO CELLULAR
ROUTER



DIGI TRANSPORT® WR44

Enterprise class, commercial grade Wi-Fi to cellular router with flexible interface options ideal for distributed branch applications

The Digi TransPort WR44 cellular router is an all-in-one branch networking solution with true enterprise-class routing, security and firewall. This multifunction cellular router features a flexible design with integrated Wi-Fi access point, USB, serial, 4-port Ethernet switch, with an optional serial expansion card.

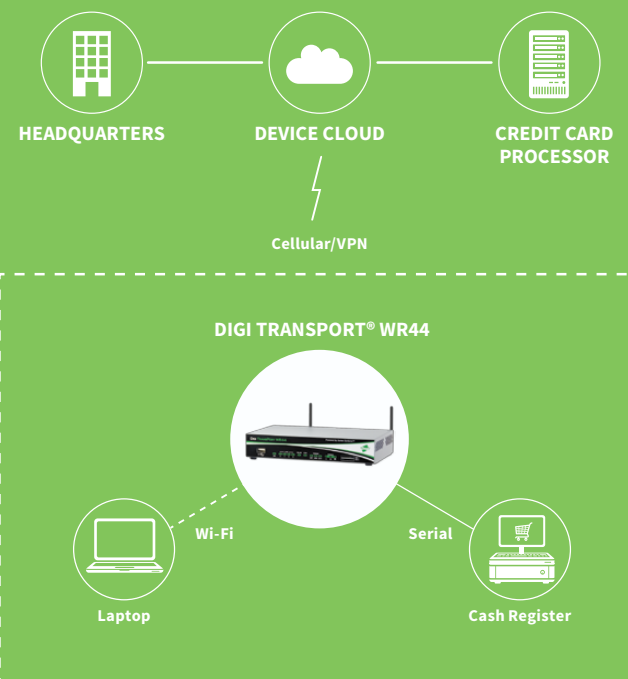
Digi TransPort WR44 is ideal for retail and utility applications. Flexible power options include 11-58 VDC barrel or Molex connectors for direct integration into DC power supplies. Digi Remote ManagerSM provides easy setup, configuration and maintenance of large installations of Digi TransPort devices.

The Digi TransPort family offers an advanced routing, security and firewall feature set including stateful inspection firewall and integrated VPN. Enterprise-class protocols incorporate BGP, OSPF and VRRP+, a patented technology built upon the popular VRRP failover standard providing true auto sensing, auto failure and auto recovery of any line drop.

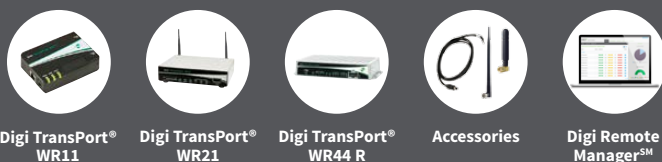
BENEFITS

- Enterprise class cellular routers with advanced dynamic routing, security and firewall features
- High speed cellular interfaces: HSPA+/CDMA EV-DO and 4G LTE
- Optional integrated 802.11 b/g/n; a/n Wi-Fi access point and 4-port Ethernet switch
- Flexible interfaces including serial with DC power options
- Powerful integrated end user programming
- Digi Remote Manager software for easy setup, configuration, and maintenance

APPLICATION EXAMPLE



RELATED PRODUCTS



SPECIFICATIONS

Digi TransPort® WR44

WIRELESS INTERFACES

WWAN**

| | |
|--------------------------|---|
| LTE - EMEA (L1) | 450/800/850/900/1800/1900/2100/2600 MHz; 3G fall back to 850/900/1900/2100MHz and 2G fall back to 850/900/1800/1900 MHz; Transfer rate (max): 50 Mbps Up, 100 Mbps Down |
| LTE - NORTH AMERICA (L5) | Software defined multi-carrier (Verizon, AT&T, and Sprint) 700/850/1700(AWS)/1900 MHz; 2G/3G GSM fall back to 850/900/1700AWS/1800/1900/2100 MHz; 2G/3G CDMA fall back to 800/1900 MHz; Transfer rate (max): 50 Mbps up, 100 Mbps down, Verizon Private Network, DMNR and PNTM Approved |
| LTE - NORTH AMERICA (L6) | 700/850/1700(AWS)/1900 MHz; 2G/3G fall back to 850/1900 MHz; Transfer rate (max): 50 Mbps Up, 100 Mbps Down |
| LTE - VERIZON (L8) | 700/1700(AWS) MHz; No 2G/3G fall back; Transfer rate (max): 50 Mbps Up, 100 Mbps Down, Verizon Private Network, DMNR and PNTM Approved |
| HSPA+ (U9) | 850/900/1700 (AWS)/1900/2100 MHz; Transfer rate (max): 5.76 Mbps Up, 21 Mbps Down |
| GSM-R (R5)* | 900/1800/1900 MHz (TRM-5); GPRS Class 10; Transfer rate (max): 42.8 Kbps Up, 85.6 Kbps Down |
| CDMA EV-DO (DX)* | 450 MHz; EV-DO Rev B; R-UIM support; Transfer rate (max): 14.7 Mbps Up; 5.4 Mbps Down |
| CONNECTOR | Ux, Lx variants: 2 x 50 Ω SMA (Center pin: female); Dx, Bx variants: 1 x 50 Ω SMA (Center pin: female) |
| SIM SLOTS | 2, Mini-SIM (2FF) |
| SIM SECURITY | SIM slot cover plate optional |

WI-FI*

| | |
|---------------------|--|
| STANDARD | 802.11 b/g/n; a/n |
| MODES | Access point, Client and support for multiple SSID |
| TRANSMIT POWER | 20 dBm + 1.0/-1.5 dBm |
| RECEIVE SENSITIVITY | 54 Mbps / <-72 dBm and 11 Mbps / -90 dBm |
| SECURITY | Open or shared key authentication; WEP (64- and 128-bit) encryption; WPA/WPA2 with RADIUS (WPA Enterprise and pre-shared keys) |
| CONNECTORS | 2 x 50 Ω RP-SMA (Center pin: male) |

GPS*

| | |
|---------------------|--|
| CHANNELS | 50 |
| SENSITIVITY | -163 dB |
| PROTOCOL | NMEA 0183 V2.3 sentence output; +3.3 VDC active antenna drive; NMEA stream to local serial port or over TCP/IP |
| NAVIGATION | Galileo ready |
| AUGMENTATION | SBAS |
| COLD START | < 27 seconds TTFF (90%) |
| HORIZONTAL ACCURACY | < 2.5 meters (90%) |
| VELOCITY ACCURACY | 0.1m/s |
| CONNECTOR | 1 x 50 Ω SMA (Center pin: female) |
| ADDITIONAL FEATURES | Send GPS via UDP/IP, TCP/IP (up to two destinations) or serial; Customize and/or send data using Python; GPS status query; Time source capable |

WIRED INTERFACES

SERIAL

| | |
|----------------|---|
| PORTS | 1; Expansion cards available to increase serial ports |
| STANDARD | RS-232; Expansion cards available in RS-422/485 |
| ASYNC/SYNC | Async |
| DTE/DCE | DCE |
| SIGNAL SUPPORT | TXD, RXD, RTS, CTS, DTR, DCD, DSR, RI |
| FLOW CONTROL | Software (XON/XOFF), Hardware supported |

* Optional hardware. Lead time and/or minimum order quantity may apply. Contact Digi Sales for details.

** Transfer rates are network operator dependent

*** Reduced cellular performance may occur outside of -20° C to +60° C. Standard temperature power supplies may reduce temperature range.

**** The enclosure rating is self-declared and has not been formally verified by an independent lab.

SPECIFICATIONS

Digi TransPort® WR44

WIRED INTERFACES

SERIAL (CONTINUED)

| | |
|---------------------|-------------|
| COM PORT REDIRECTOR | RealPort® |
| CONNECTOR | DB-9 female |

ETHERNET

| | |
|--------------------------|---|
| PORTS | 4 |
| STANDARD/PHYSICAL LAYER | IEEE 802.3; 10/100 Base-T |
| DATA RATE/MODE/INTERFACE | 10/100 Mbit/s; Full or Half duplex; Auto MDI/MDIX |
| CONNECTOR | RJ-45 |

USB

| | |
|-----------|--------------------|
| PORTS | 1 |
| STANDARD | USB 2.0 |
| SIGNALING | Full- or low-speed |
| CONNECTOR | Type A |

SOFTWARE

| | |
|----------------------------------|---|
| REMOTE MANAGEMENT | Digi Remote Manager SM (cloud based); SNMP v1/v2c/v3 (user installed/managed) |
| LOCAL MANAGEMENT | Web Interface (HTTP/HTTPS); CLI (Telnet, SSH, SMS, Serial port) |
| MANAGEMENT/TROUBLESHOOTING TOOLS | FTP, SFTP, SCP, Protocol Analyzer with PCAP for Wireshark, Event Logging with Syslog and SMTP, NTP/SNTP |
| PROGRAMMING TOOLS/ENVIRONMENTS | Python, DIA, Digi ESP TM |
| MEMORY | 128 MB NAND Flash/64 MB DDR2 SDRAM |

POWER

| | |
|------------------|---|
| INPUT | 9 – 36 VDC |
| CONSUMPTION | 15W max, 8.5W typical |
| CONNECTOR | Locking barrel and 4-pin terminal block (2 pins are used for power; the other 2 pins are used for I/O). |
| DC POWER CORD* | Locking barrel to bare wire or 4-pin connector to bare wire |
| DC POWER SUPPLY* | 100-240 VAC 50/60 Hz; Option of standard temperature or extended temperature |

PHYSICAL

| | |
|------------------------|---|
| DIMENSIONS (L X W X H) | 5.7 in x 8.3 in x 1.6 in (145 mm x 210 mm x 40 mm) |
| WEIGHT | 1.98 lb (0.9 kg) |
| STATUS LEDS | Power, LAN, Wi-Fi, Serial, WWAN (Link, Act, SIM), Signal strength |
| MATERIAL/RATING**** | Industrial (Metal)/ IP30 |
| MOUNTING | Brackets for wall mount & DIN rail sold separately |

ENVIRONMENTAL

| | |
|------------------------------|------------------------------------|
| OPERATING TEMPERATURE *** | 0° C to +40° C |
| STORAGE TEMPERATURE | -40° C to +85° C |
| RELATIVE HUMIDITY | 0% to 95% (non-condensing) @ 25° C |
| ETHERNET ISOLATION | 1.5 kV RMS |
| SERIAL PORT PROTECTION (ESD) | 15 kV |
| HAZARDOUS (CLASS 1 DIV 2) | N/A |
| CONFORMAL COATING | N/A |

* Optional hardware. Lead time and/or minimum order quantity may apply. Contact Digi Sales for details.

** Transfer rates are network operator dependent

*** Reduced cellular performance may occur outside of -20° C to +60° C. Standard temperature power supplies may reduce temperature range.

**** The enclosure rating is self-declared and has not been formally verified by an independent lab.

SPECIFICATIONS

Digi TransPort® WR44

APPROVALS

| | |
|---------------------------|--|
| GSM/UMTS | PTCRB, NAPRD.03, GCF-CC, R&TTE, EN 301 511 |
| CDMA/EV-DO | CDG TIA/EIA-690, CDG TIA/EIA-98-E |
| CELLULAR CARRIERS | Certified by most major carriers. |
| SAFETY | UL 60950, CSA 22.2 No. 60950, EN60950 |
| EMISSIONS/IMMUNITY | CE, FCC Part 15 Class B, AS/NZS CISPR 22, EN55024, EN55022 Class B |
| WARRANTY | |
| PRODUCT WARRANTY | 5 years |

ENTERPRISE SOFTWARE

DESCRIPTION

PROTOCOLS

HTTP, HTTPS, FTP, SFTP, SSL, SMTP, SNMP (v1/v2c/v3), SSH, Telnet and CLI for web management; remote management via Digi Remote Manager; SMS management, protocol analyzer, ability to capture PCAP for use with Wireshark; DynDNS; Dynamic DNS client compatible with BIND9/No-IP/DynDNS

SECURITY/VPN

Stateful inspection firewall with scripting, address and port translation; VPN: IPSec with IKEv1, IKEv2, NAT Traversal; SSL, SSLv2, FIPS 197, Open VPN client and server; PPTP, L2TP; VPN Tunnels included: 5; Maximum VPN Tunnels available: 200; Cryptology: SHA-1, MD5, RSA; Encryption: DES, 3DES and AES up to 256-bit; Authentication: RADIUS, TACACS+, SCEP for X.509 certificates; Content Filtering (via 3rd party) ; MAC Address Filtering; VLAN support; Ethernet Port Isolation

ROUTING/FAILOVER

IP pass-through ; NAT, NATP with IP Port Forwarding; Ethernet Bridging; GRE; Multicast Routing; Routing Protocols: PPP, PPPoE, RIP (v1, v2) OSPF, SRI, BGP, iGMP routing (multicast); RSTP (Rapid Spanning Tree Protocol); IP Failover: VRRP, VRRP+TM; Automatic failover/fail-back to second GSM network/Standby APN

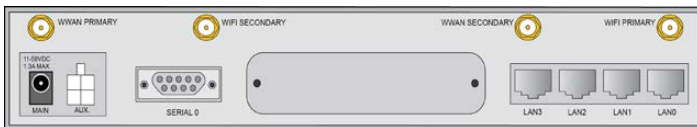
OTHER PROTOCOLS

DHCP; Dynamic DNS client compatible with BIND9/No-IP/DynDNS; QoS via TOS/DSCP/WRED

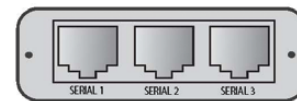
SPECIALTY/LEGACY PROTOCOLS

RealPort®; Modbus UDP/TCP to serial; X.25 including XOT, SNA/IP, TPAD and PAD; Protocol switch*

PRODUCT IMAGES



CONNECTOR



ASYNCHRONOUS SERIAL PORTS (A3)

3x asynchronous RS-232 serial ports

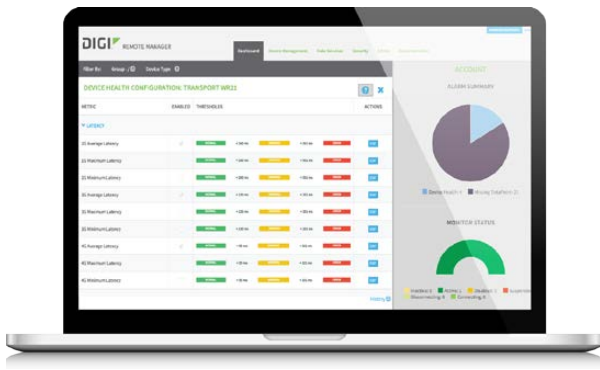
* Optional hardware. Lead time and/or minimum order quantity may apply. Contact Digi Sales for details.

** Transfer rates are network operator dependent

*** Reduced cellular performance may occur outside of -20° C to +60° C. Standard temperature power supplies may reduce temperature range.

****The enclosure rating is self-declared and has not been formally verified by an independent lab.

DIGI REMOTE MANAGERSM



CAPABILITIES

- Centralized management of remote devices over 3G/4G LTE
- Define standard configurations and automatically monitor individual devices for PCI security compliance
- Report and alert on performance statistics, including connection history, signal quality, latency, data usage and packet loss
- No servers or applications to operate and maintain
- Complete tasks for your entire device network in minutes
- Edit configurations and update firmware for your individual devices or groups
- Monitor the status and location of your remote device via a web browser
- Active or deactivate cellular lines and monitor data to ensure you never incur overage charges

INFRASTRUCTURE

- Hosted in multiple commercial-grade SAS 70 certified facilities in North America and Europe
- Superior availability, operating to 99.9% or greater
- Open APIs available to support application development

SECURITY

- Certified SSAE-16 and ISO27001 facilities
- Member of the Cloud Security Alliance
- Over 175 Security Controls in place to protect your data
- Enables compliance with security frameworks like PCI, HIPAA, NIST and more
- Earned SkyHigh's Cloud Trust Program highest ranking of Enterprise-Ready

| PART NUMBERS | DESCRIPTION |
|------------------|---|
| WR44-L100-CE1-SW | Digi TransPort WR44 - Cellular (4G LTE International), No Wi-Fi, Antennas & Power Supply Included (International) |
| WR44-L100-NE1-SW | Digi TransPort WR44 - Cellular (4G LTE International), Wi-Fi, Antennas & Power Supply Included (International) |
| WR44-L1A3-CE1-SW | Digi TransPort WR44 - Cellular (4G LTE International), No Wi-Fi, Async (3 RS-232 Ports), Antennas & Power Supply Included (International) |
| WR44-L500-CE1-SU | Digi TransPort WR44 - Cellular (4G LTE Multi-Carrier Software Defined, North America), No Wi-Fi, Antennas & Power Supply Included |
| WR44-L500-NE1-SU | Digi TransPort WR44 - Cellular (4G LTE Multi-Carrier Software Defined, North America), Wi-Fi, Antennas & Power Supply Included |
| WR44-L5A3-CE1-SU | Digi TransPort WR44 - Cellular (4G LTE Multi-Carrier Software Defined, North America), No Wi-Fi, Async (3 RS-232 Ports), Antennas & Power Supply Included |
| WR44-L600-CE1-SU | Digi TransPort WR44 - Cellular (4G LTE North America (AT&T and GSM Carriers)), No Wi-Fi, Antennas & Power Supply Included |
| WR44-L600-NE1-SU | Digi TransPort WR44 - Cellular (4G LTE North America (AT&T and GSM Carriers)), Wi-Fi, Antennas & Power Supply Included |
| WR44-L6A3-CE1-SU | Digi TransPort WR44 - Cellular (4G LTE North America (AT&T and GSM Carriers)), No Wi-Fi, Async (3 RS-232 Ports), Antennas & Power Supply Included |
| WR44-L800-CE1-SU | Digi TransPort WR44 - Cellular (4G LTE Verizon), No Wi-Fi, Antennas & Power Supply Included |
| WR44-L800-NE1-SU | Digi TransPort WR44 - Cellular (4G LTE Verizon), Wi-Fi, Antennas & Power Supply Included |
| WR44-L8A3-CE1-SU | Digi TransPort WR44 - Cellular (4G LTE Verizon), No Wi-Fi, Async (3 RS-232 Ports), Antennas & Power Supply Included |
| WR44-U900-CE1-SW | Digi TransPort WR44 - Cellular (HSPA+ Global), No Wi-Fi, Antennas & Power Supply Included (International) |
| WR44-U900-NE1-SW | Digi TransPort WR44 - Cellular (HSPA+ Global), Wi-Fi, Antennas & Power Supply Included (International) |
| WR44-U9A3-CE1-SW | Digi TransPort WR44 - Cellular (HSPA+ Global), No Wi-Fi, Async (3 RS-232 Ports), Antennas & Power Supply Included (International) |